

## DESIGN ROME S S34



Create a distinctive and variable rhythm with Design Rome™ S S34 for ventilated steel facade systems.

### BE INSPIRED!

Experience the shape and the detail on the finished facade surface. Energise your facade with Liberta solar panels. Visualise the materials and colours in different lighting, and from various perspectives, with the Ruukki Design Palette Visualiser.

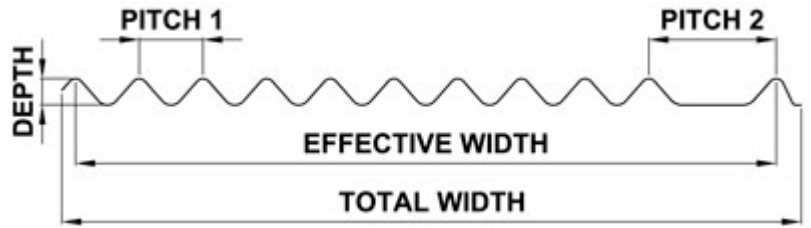
Applications: facade and ceiling surfaces.

#### **Ruukki® emotion**

Available also with perforation and backlighting.

The information on our website is accurate to the best of our knowledge and understanding. Although every effort has been made to ensure accuracy, the company cannot accept any responsibility for any direct or indirect damages resulting from possible errors or incorrect application of the information of this publication. We reserve the right to make changes.

# PROPERTIES



**Model name**

Design Rome S S34

**Effective width**

898

**Total width**

939

**Depth**

34

**Pitch**

82

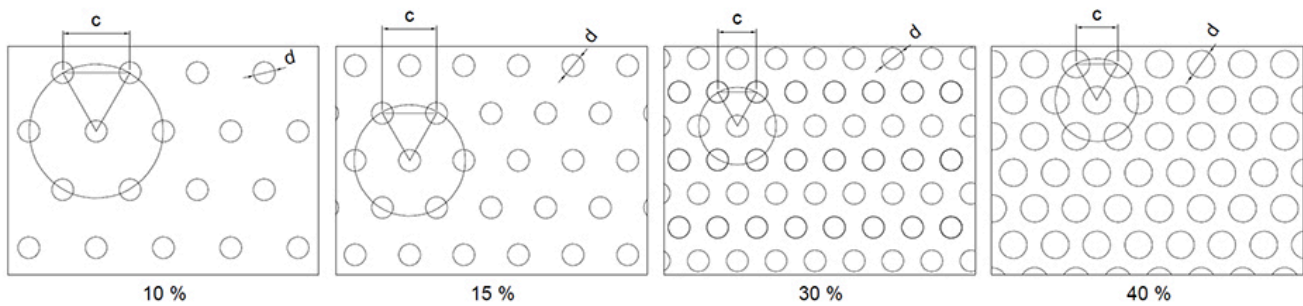
**Maximum length**

500

**Minimum length**

7000

# PERFORATION LAYOUT



10 % perforation, hole size  $d = 4$  mm, centres  $c = 12$  mm

15 % perforation, hole size  $d = 4$  mm, centres  $c = 10$  mm

30 % perforation, hole size  $d = 4$  mm, centres  $c = 7$  mm

40 % perforation, hole size  $d = 5$  mm, centres  $c = 7.5$  mm

# MATERIALS

Material	Material thickness (mm)	Weight (kg/m <sup>2</sup> )	Surface treatment	Reaction to fire
Steel	0.6	6.56	GreenCoat Hiarc	A1
Steel	0.6	6.56	Powder coating	A2 - s1,d0
Aluminium	0.7	2.68	Powder coating *	-
Aluminium	0.7	2.68	PVDF *	-

\*) Non-stock item

## COLOURS & COATINGS

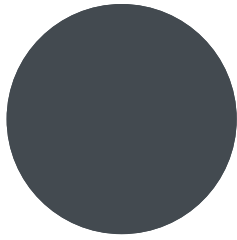
### COATINGS

Colour chart	Coating	Colour
Standard	GreenCoat HIARC	RR20, RR21, RR23, RR24, RR29, RR32, RR33, RR34, RR35, RR40, RR41, RR42, RR43
	GreenCoat HIARC Matt	RR40, RR41, RR45
Colourful	GreenCoat HIARC & Powder paint	RR11, RR22, RR24, RR26, RR29, RR30, RR31, RR32, RR33, RR34, RR35, RR36, RR37, RR44, RR45, RR750
	Powder paint	RAL 2000, RAL 2001, RAL 3003, RAL 6019, RAL 6027, RAL 9010
Unique	GreenCoat HIARC & Powder paint	RAL and NCS colours available by request

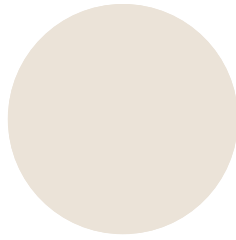
Also other coating types (e.g. anti-graffiti) are available upon request (non-stock material).

Minimum order sizes:

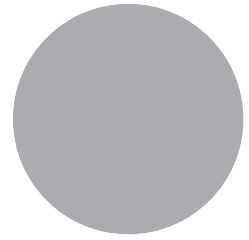
- Standard chart: No limitations
- Colourful & unique chart: HIARC 2000m<sup>2</sup>; Powder paint 100m<sup>2</sup>



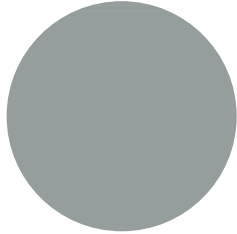
RR23 DARK GREY



RR20 WHITE



RR21 LIGHT GREY



RR22 GREY



RR887 CHOCOLATE BROWN



RR40 SILVER MATT



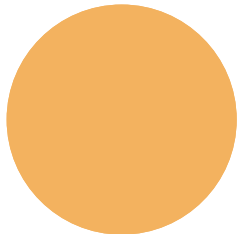
RR41 DARK SILVER MATT



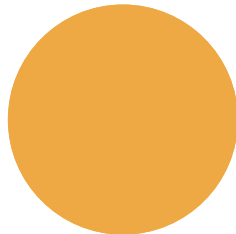
RR45 METALLIC GRAPHITE



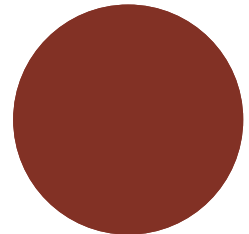
RR 11 SPRUCE GREEN



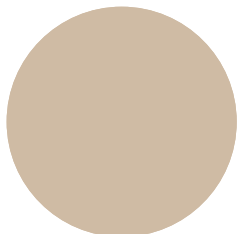
RR24 LIGHT YELLOW



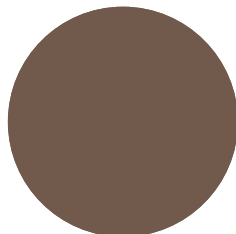
RR26 YELLOW



RR29 RED



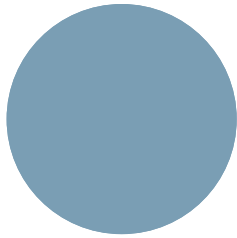
RR30 LIGHT BROWN



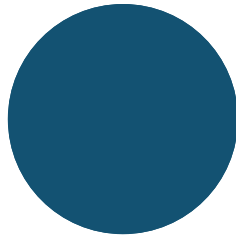
RR31 BROWN



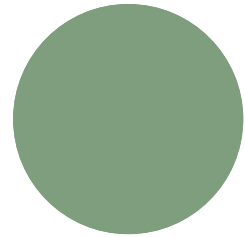
RR33 BLACK



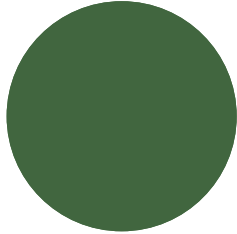
RR34 LIGHT BLUE



RR35 BLUE



RR36 LIGHT GREEN



RR37 GREEN



RR42 GOLD



RR43 COPPER



RR44 METALLIC BLUE



RR750 TILE RED

## ACCESSORIES

Facade cladding system, completed with flashings, fasteners and support studs provides a fully finished facade, as well as quick and easy installation.



**07 JUN, 2017**

EN\_Cladding\_Accessories\_09\_2019  
PDF, 2.98 MB



**15 SEP, 2016**

Profiled sheets and purlins accessories  
PDF, 4.80 MB

# DESIGN TOOLS

To make both architectural and structural design work easier, with accurate product information in 3D form, we offer a selection of CAD / BIM -objects and software tools, to be downloaded from the Software Toolbox portal.

## READY MODELLED BIM OBJECTS

Download objects for ArchiCAD

Download objects for Revit

## DETAIL DRAWINGS (.DWG)



06 MAY, 2016

Ruukki\_design\_profiles\_detail\_drawings\_DWG

ZIP, 1.64 MB

## DETAIL DRAWINGS (.PDF)



06 MAY, 2016

Ruukki\_design\_profiles\_detail\_drawings\_PDF

ZIP, 1.32 MB

# INSTRUCTIONS

## ORDER FORMS



06 MAY, 2016

Ruukki-Design-Profiles-Order-form

ZIP, 900.38 KB



06 MAY, 2016

Design Cor-Ten S7 Order form

ZIP, 325.11 KB

## ASSEMBLY INSTRUCTIONS

Assembly instructions document includes information about:

- Packing
- Transportation and unloading
- Storing
- Assembling.



06 MAY, 2016

Ruukki\_design\_profiles\_fastening\_instructions\_PDF

ZIP, 247.26 KB

## TOLERANCES



**15 JUN, 2016**

Design profile product tolerances 24.11.2015  
PDF, 48.43 KB

## MAINTENANCE INSTRUCTIONS

Maintenance instructions document contains information about:

- Washing
- Painting



**06 MAY, 2016**

Ruukki colour coated steel - Maintenance instructions  
PDF, 600.37 KB



**06 MAY, 2016**

Ruukki powder coated facade claddings - Maintenance instructions  
PDF, 602.18 KB

## CERTIFICATES & APPROVALS

### DECLARATION OF PERFORMANCE



**06 MAY, 2016**

Declaration of Performance 25/PP/PAR - Cladding products  
PDF, 56.68 KB