

Design Venice S10

Create a minimalistic rhythm with Design Venice™ S10 for ventilated steel facade systems.

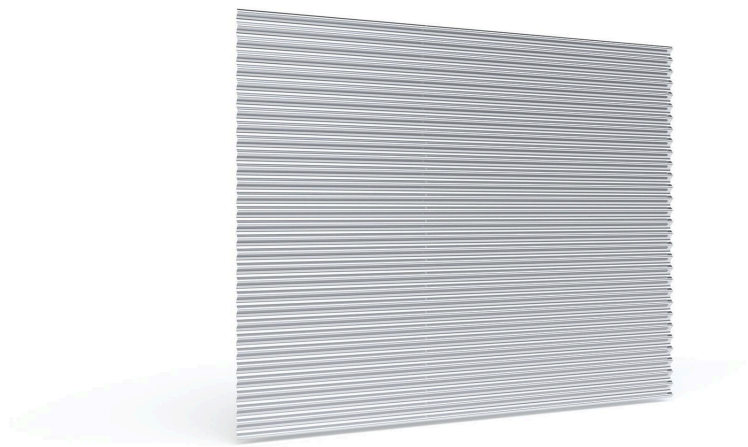
Applications: facade and ceiling surfaces.

Ruukki® Emotion

Available also with perforation and backlighting.

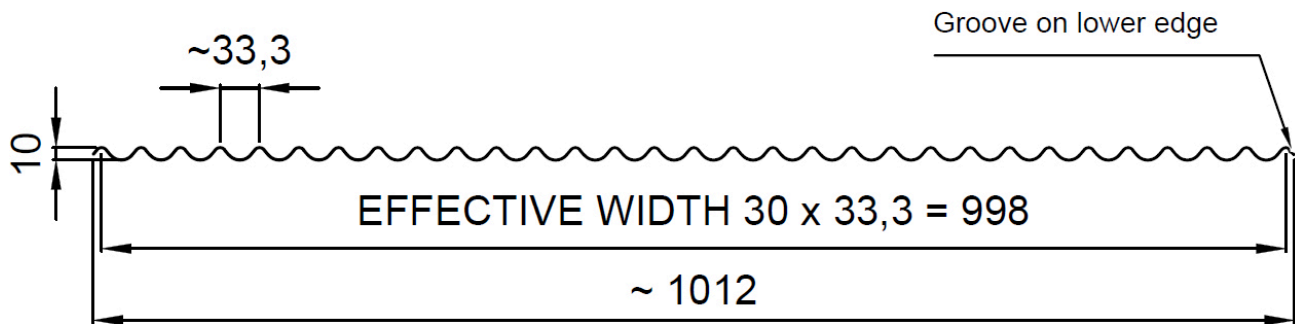
[SEND CONTACT REQUEST](#)

[BIM - OBJECTS](#)

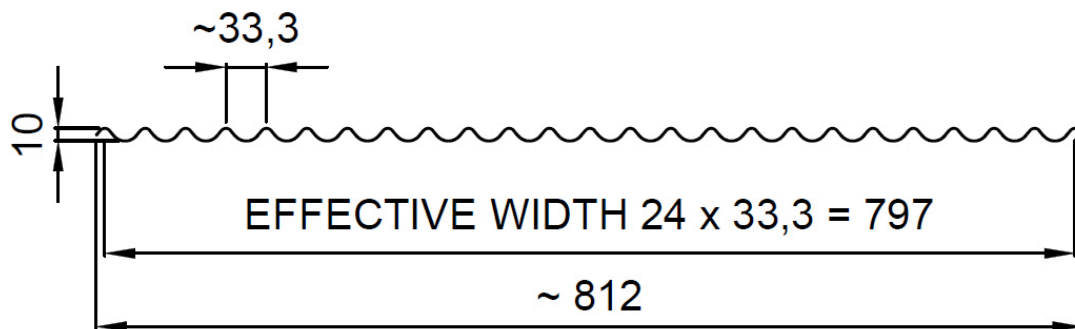


Properties

Cross-section drawing for Design Venice S10 made out of colour coated steel, stainless steel, aluminium or Cor-Ten



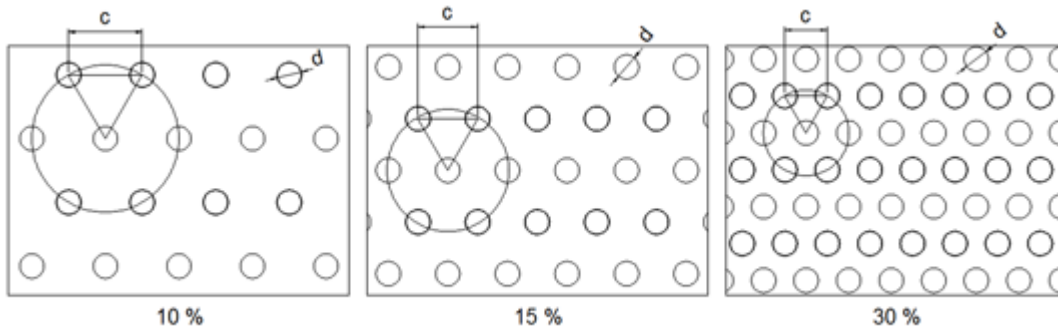
Cross-section drawing for Design Venice S10 made out of Rheinzink or copper & brass



Model name	Design Venice S10
Effective width	998 mm *
Total width	1012 mm *
Depth	10 mm
Pitch	33 mm
Minimum length	500 mm
Maximum length	7000 mm

* Rheinzink, Copper & Brass: Effective width 797 mm, total width 812 mm

Perforation layout



10 % perforation, hole size $d = 4$ mm, centres $c = 12$ mm

15 % perforation, hole size $d = 4$ mm, centres $c = 10$ mm

30 % perforation, hole size $d = 4$ mm, centres $c = 7$ mm

40 % perforation, hole size $d = 5$ mm, centres $c = 7.5$ mm

Materials

Materials

Material	Material thickness (mm)	Weight (kg/m ²)	Surface treatment	Available with perforation	Stock material	Reaction to fire
Steel	0.6	5.9	GreenCoat Hiarc	x	x	A1
	0.6	5.9	Powder coating	x	x	A2 - s1,d0
Aluminium	0.7	2.4	Powder coating	x	-	-
	0.7	2.4	PVDF coating	x	-	-
Cor-Ten	0.7	7.0	Coating on reverse side	x	x	A1
Rheinzink	0.7	6.3	Pre-patinated (no coating)	-	-	A1
Copper, Brass	0.6	6.7	Pre-patinated (no coating)	-	-	A1
Stainless steel	0.5	4.9	Smooth 2B (steel grade 304, 316)	-	-	A1

Coatings and colors

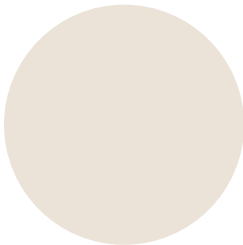
Colour chart	Coating	Colour
Standard	GreenCoat HIARC (steel)	RR20, RR21, RR23, RR40, RR41, RR42, RR43
	GreenCoat HIARC Matt (steel)	RR40, RR41, RR45
Extended	GreenCoat HIARC (steel)	RR22, RR24, RR26, RR29, RR32, RR33, RR34, RR35, RR44, RR45, RR750 More RR colours
	PVDF (aluminium)	Most common RAL colours
	Powder paint (steel&aluminium)	RAL colours

Minimum order sizes:

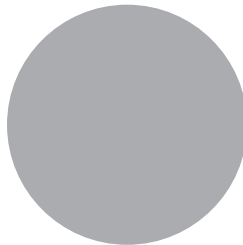
Standard chart: No limitations

Extended chart:

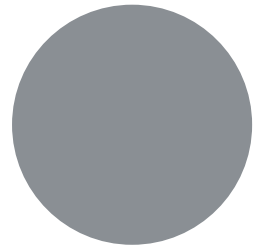
- GreenCoat HIARC (steel): 100m²
- PVDF (aluminium): 500 m²
- Powder paint (steel&aluminium): 100m²



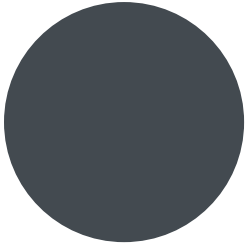
RR20



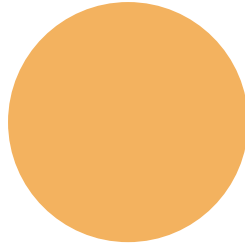
RR21



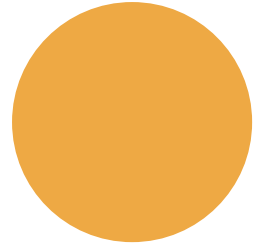
RR22



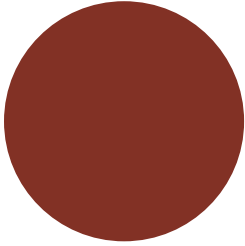
RR23



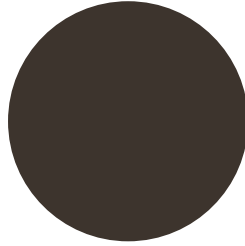
RR24



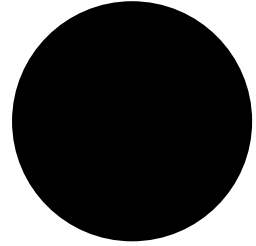
RR26



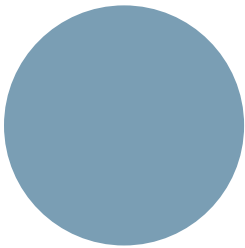
RR29



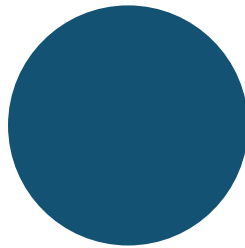
RR32



RR33



RR34



RR35



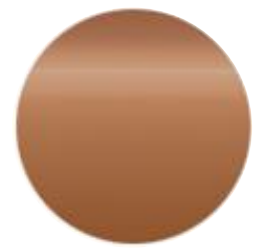
RR40



RR41



RR42



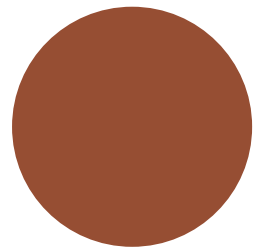
RR43



RR44



RR45



RR750

BIM objects



Download BIM objects to your desktop

ProdLib brings Ruukki products as BIM models directly to your desktop in 3D form for design programs AutoCAD, Autodesk Revit, Archicad and Tekla Structures. Product libraries compile all necessary design models and detailed drawings in one place. Library updates are automatically notified, so as a user you can be sure that your product information is constantly up to date. ProdLib can also be used as a standalone desktop application.

[Go to BIM library](#)

Download documents

Declaration of performance

Design profile S18:



[Declaration of Performance 28/PP/VIM - Low profiles](#)

PDF, 233.1 KB

Other design profiles:



[Declaration of Performance 25/PP/PAR - Cladding products](#)

PDF, 48.8 KB

Cor-Ten design profiles:



[Ruukki Cor-Ten facades - Certification](#)

PDF, 31.8 KB

Order form



[Ruukki Design Profile order form_2.2](#)

XLSM, 0.6 MB

Maintenance instructions



Ruukki Cor-Ten facades - maintenance instructions

PDF, 70.3 KB



Ruukki powder coated facade claddings - Maintenance instructions

PDF, 0.6 MB



Ruukki colour coated steel - Maintenance instructions

PDF, 0.6 MB

Accessory documents



EN_Cladding_Accessories_02_2020

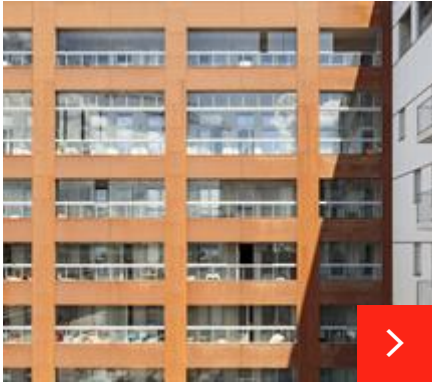
PDF, 3.6 MB



Profiled sheets and purlins accessories

PDF, 4.8 MB

References



Jallukka apartment building

“The facade also includes handmade Danish bricks and concrete. Cor-Ten® is made from steel, and is thus excellently suited for a building meant for musicians an...



Retroville shopping centre

This modern shopping centre in Kyiv features energy-efficient Ruukki Forma system with high air-tightness sandwich panels and a wide variety of new and innovati...



KV Triangeln - Residential building in Sweden

Steel and especially design profile is really interesting material because you can achieve homogeneous look without visible joints.



Nova hospital in Finland

Ruukki Design profiles can also be used indoors. Our products were chosen for both the hospital's exterior walls and indoor premises.