

INSTRUCTIONS FOR FASTENING THE PANEL AND FOLLOW-UP OF THE DIMENSIONS

FACADE CLADDINGS / LIBERTA RAINSCREEN PANELS LIBERTA ELEGANT 500 & LIBERTA ELEGANT 500 GRANDE



FASTENING OF THE PANEL

The panel is fastened to support studs by fastening holes in the upper edge of the panel. The cassettes should not be supported on top of each other. Cassettes must be left with a 2 mm gap in the lock. This also ensures a proper joint width. To ease the process a gap template is recommended.

See the other side of this sheet for a visual overview of the installation process. Use the QR code for a video overview.

- Pay close attention to the leveling of the first row of cassettes
- Remove drilling and cutting debris immediately to avoid rust spots
- Use of an angle grinder is forbidden
- Use touch-up paints for any scratches
- Protect products from dirt (e.g mortar, paint, PU-foam) during the whole time as they are very difficult to remove afterwards

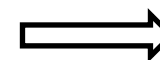
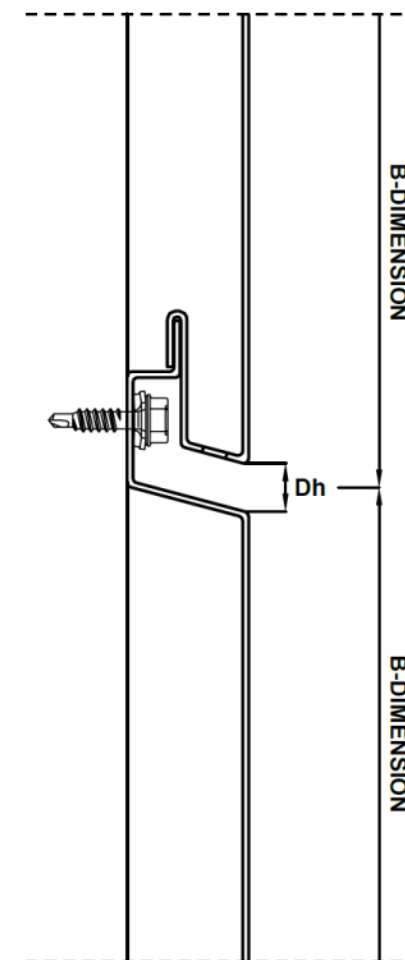
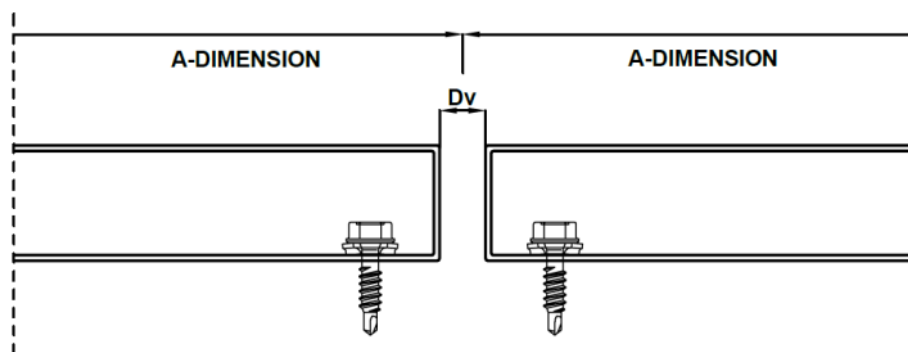
FOLLOW-UP OF THE DIMENSIONS

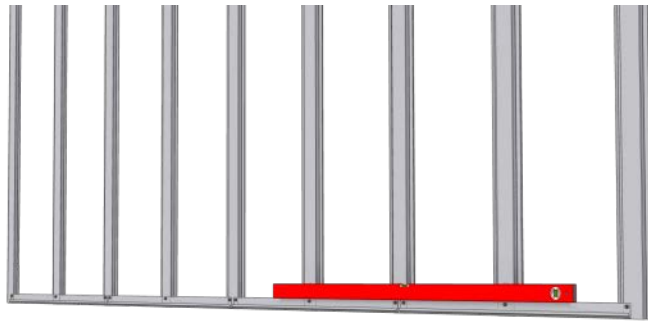
Follow the A-, B- and Dh/Dv-dimensions. Check the dimensions from the plans! Check the module height with the measuring tape constantly!

Panel tolerances: ± 1 mm (A-, B- and Dh/Dv-dimensions)

Sub frame tolerances in horizontal direction:

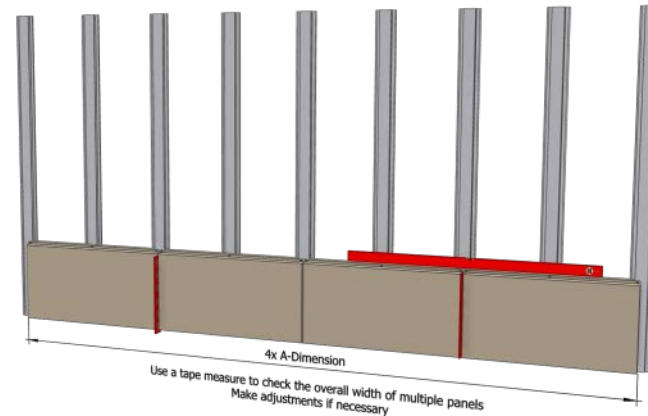
- For one panel: ± 1 mm
- Between each support studs: ± 1 mm





1.

- Align and level starting fillets (CA1SF2) on wall studs
- Use self-drilling screws e.g S3H48020D03A4



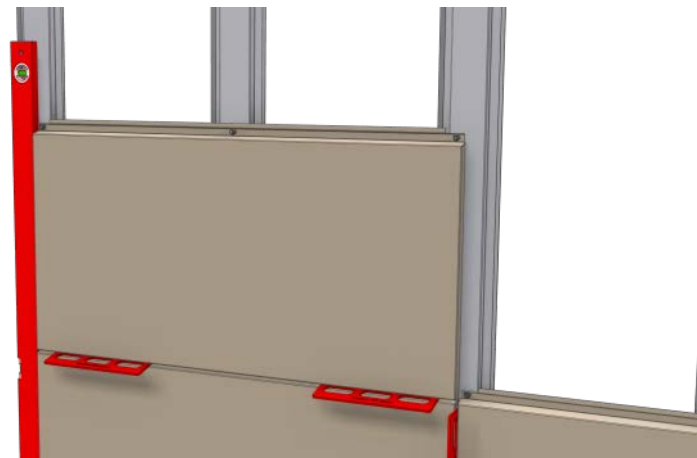
2.

- Install the first row of cassettes
- The first row may rest on the starting fillets
- Use self-drilling screws to fasten the panels
- Use a gap template to set the vertical joint width
- Align the row before continuing to the next one
- Check the overall width over multiple panels and make adjustments if required



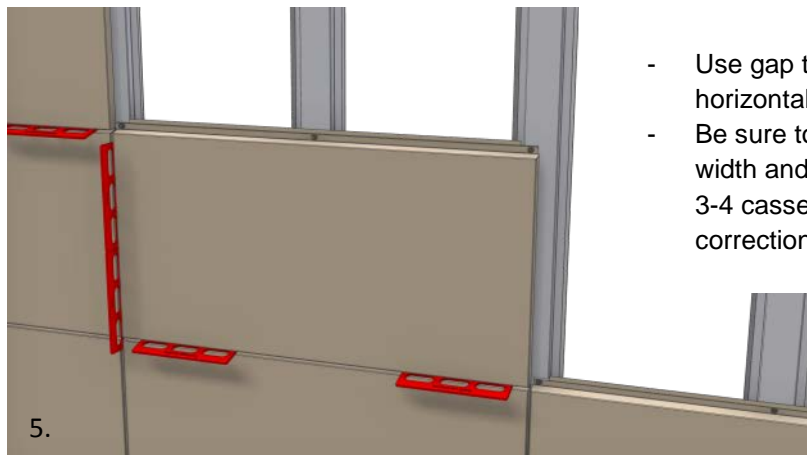
3.

- Use a gap template to leave a 2 mm gap between the panels in the horizontal joint



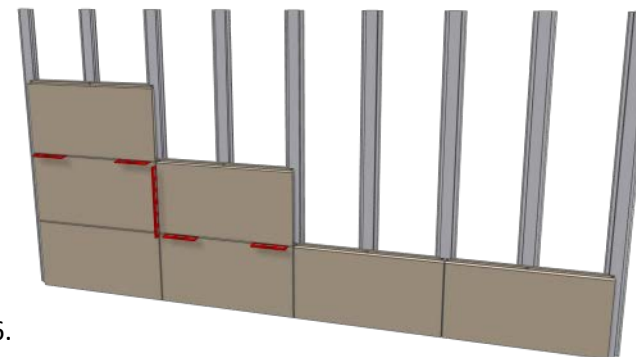
4.

- Align the cassettes vertically
- The cassettes have slotted fixing holes in the upper edge for sideways adjustment
- Fully tighten the screws when done with adjustment



5.

- Use gap templates in both horizontal and vertical joints
- Be sure to check the overall width and height after every 3-4 cassettes and make corrections if necessary



6.

- Continue installing the cassettes using the gap templates
- Keep checking the overall width and height of multiple panels and adjust them accordingly