

Sandwich panel SPA EE for external walls

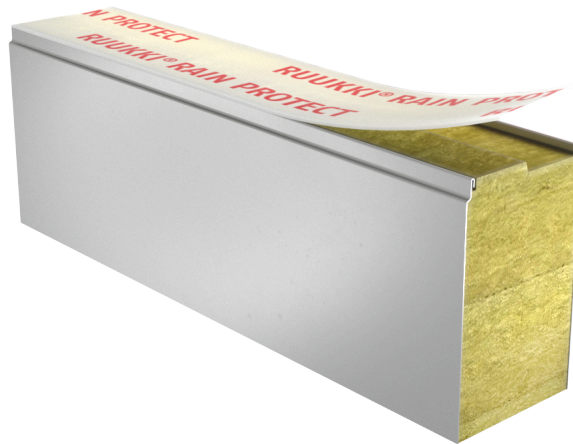
Sandwich panel SPA EE is available in thicknesses 200+ and 300.

It is a perfect solution for most buildings and structures, combining high quality with very good technical properties. New lightweight core ensures excellent insulation properties.

With the filling consisting of non-combustible, lightweight and environmentally friendly mineral wool, this sandwich panel meets the insulation regulations in Scandinavia.

Application:

- External walls (standard fix)



Properties

Model name	Sandwich panel SPA EE for external walls
Standard module width	1200 mm
Minimum length	2000 mm
Maximum Length	13499 mm
External facing thickness	0.6 mm
Internal facing thickness	0.5 mm

Thickness D (mm)	200+	300
Weight (kg/m ²)	24.8	31.9
U-value (W/m ² K)	0.18	0.12
Sound insulation Rw (dB)	28	26
Reaction to fire	A2-s1. d0	A2-s1. d0

Wall fire resistance values & max span horizontal / vertical orientation (m):	200+	300
EI 30	7.5 / -	7.5 / -
EI 60	7.5 / -	7.5 / -
EI 90	7.5 / -	7.5 / -
EI 120	7.5 / -	7.5 / -
EI 180	4.0 / -	4.0 / -

Detailed information regarding the application of fire resistance ratings can be obtained from Ruukki Sales.

All properties are declared in accordance with EN 14509 and related standards.

Coatings and colors

Materials

Facing	Coating	Corrosivity category	UV resistance	Colours
External	Energy coating	C3	Ruv4	RR23, RR41
External	GreenCoat HIARC MAX	C4	Ruv4	RR20, RR21, RR22, RR23, RR29, RR33, RR35, RR40, RR41, RR45
External	GreenCoat HIARC	C3	Ruv4	RR20, RR21, RR22, RR23, RR29, RR33, RR35, RR40, RR41, RR45
External	GreenCoat HIARC matt	C3	Ruv4	RR33, RR40, RR41
External	Polyester	C3	Ruv2-3	RR20, RR21, RR23, RR946
Internal	Polyester	C3	-	RR20
Internal	Foodsafe laminate *	C4	-	White

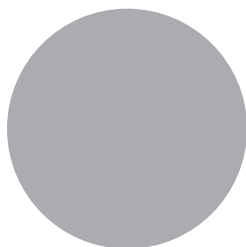
**) optional material*

UV resistance describes how well the coating is able to keep its original colour and gloss levels in accordance with EN10169. The higher the class, the better the resistance.

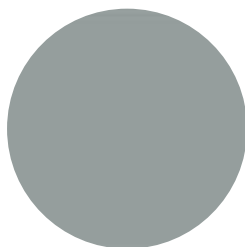
Corrosivity categories describe the outdoor climate conditions in accordance with EN12944. The higher the category, the more corrosive environment.



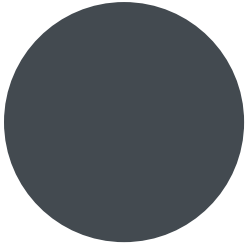
RR20 White



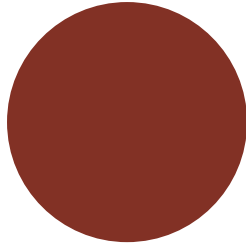
RR21 Light Grey



RR22 Grey



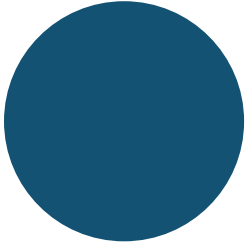
Graphite ~ RAL 7024



RR29 Red



RR33 Black



RR35 Blue



RR40 Silver matt



RR41 Dark silver matt



RR45 Metallic graphite



Micro 15



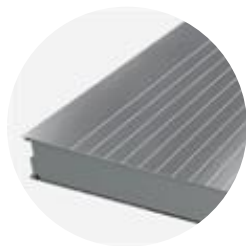
Rib 150



Rib 200



Rib 600



Linear 50



Flat F

Design tools



Traypan® software for designing sandwich panels

With TrayPan®, you can design metal faced sandwich panels made by Ruukki. A panel structure can be designed as a single- or multi-span construction. You can easily give, with a few parameters, both suction and pressure loads caused by the wind. The application also calculates the necessary fasteners.

[Go to Traypan®](#)

[Login](#)

Powered by



ProdLib

Technical documents

Here you can find all technical documents related to Ruukki's sandwich panels. Documents are organised by document type. [Click to enter document library.](#)

**Product
descriptions**



**Accessory
documents**



Load tables



**Installation
instructions**



**Maintenance
instructions**



**Sound insulation
values**



Certificates and approvals

Here you can find all certificates and approvals related to Ruukki's sandwich panels. Documents are organised by document type. Click to enter document library.

**Declaration of
performance**



**Environmental
product declaration**



**Intruder resistance
certificate**

