

Design Tokyo S18

Create a harmonic rhythm with Design Tokyo™ S18 for ventilated steel facade systems.

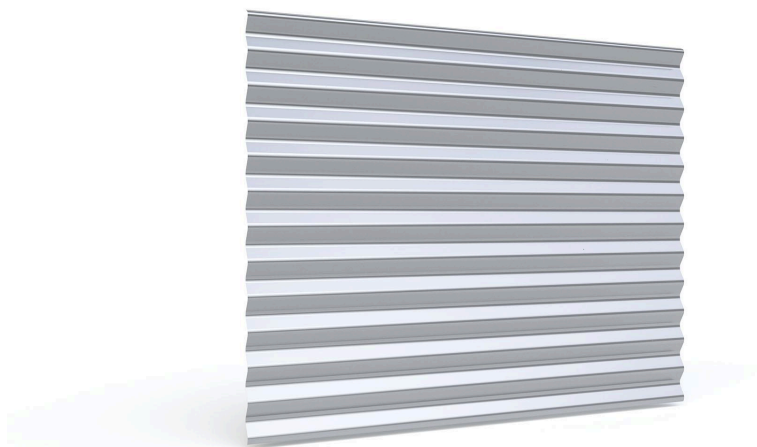
Applications: facade and ceiling surfaces.

Ruukki® Emotion

Available also with perforation and backlighting.

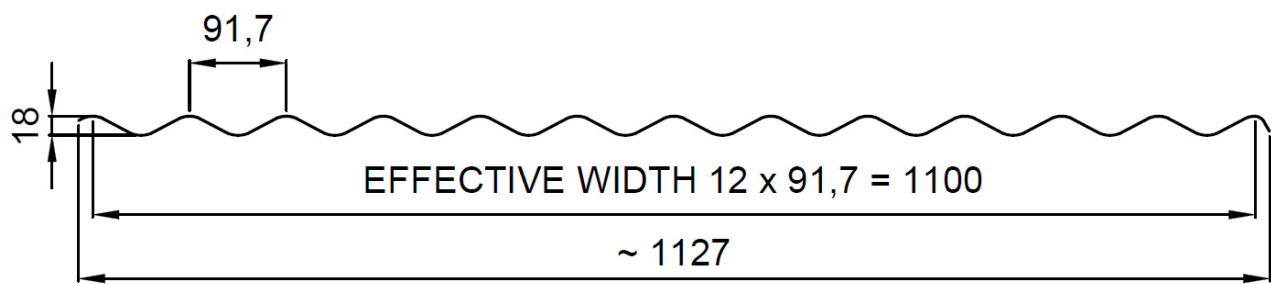
SEND CONTACT REQUEST

BIM - OBJECTS

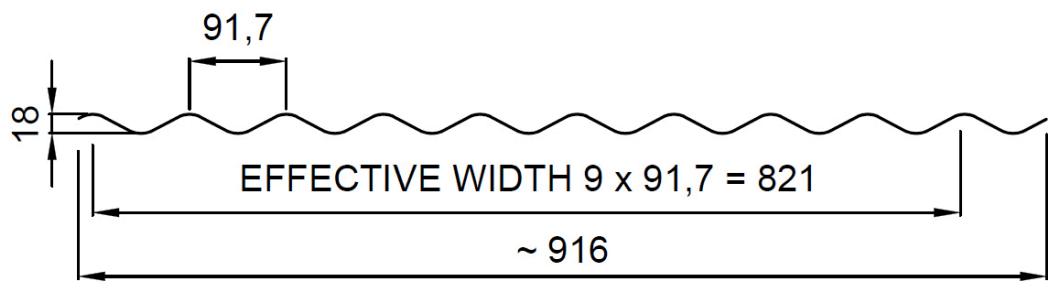


Properties

Cross-section drawing for Design Tokyo S18 made out of colour coated steel, stainless steel, aluminium or Cor-Ten



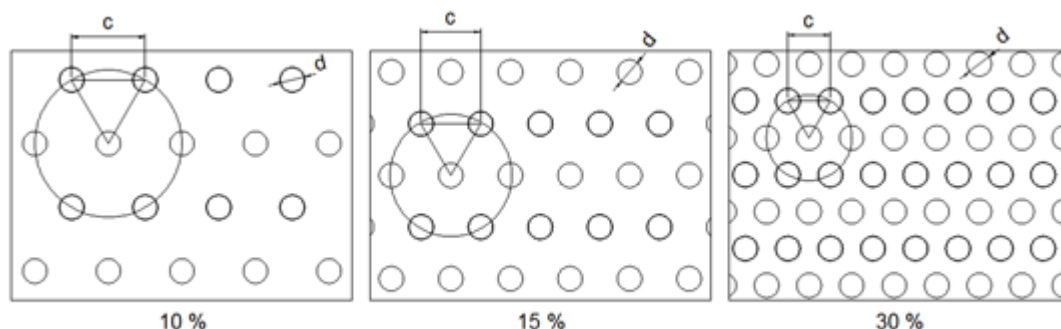
Cross-section drawing for Design Tokyo S18 made out of copper & brass



Model name	Design Tokyo S18
Effective width	1100 mm *
Total width	~1127 mm *
Depth	18 mm
Pitch	92 mm
Minimum length	600 mm
Maximum length	9000 mm

* Copper & Brass: Effective width 821 mm, total width ~1127 mm

Perforation layout



10 % perforation, hole size $d = 4$ mm, centres $c = 12$ mm

15 % perforation, hole size $d = 4$ mm, centres $c = 10$ mm

30 % perforation, hole size $d = 4$ mm, centres $c = 7$ mm

40 % perforation, hole size $d = 5$ mm, centres $c = 7.5$ mm

Materials

Materials

Material	Material thickness (mm)	Weight (kg/m ²)	Surface treatment	Available with perforation	Minimum order amount (m ²)	Reaction to fire
Steel	0.6	5.9	GreenCoat Hiarc	x	Standard colours - No limitations Extended colours - 2000*	A1
	0.6	5.9	Powder coating	x	100	A2 - s1, d0
Aluminium	0.7	2.4	Powder coating	x	250	-
	0.7	2.4	PVDF coating	x	750	-
Cor-Ten	0.7	7.0	Coating on reverse side	x	No limitations	A1
Rheinznk	0.7	6.3	Pre-patinated (no coating)	-	100	A1
Copper, Brass	0.6	6.7	Pre-patinated (no coating)	-	100	A1
Stainless steel	0.5	4.9	Smooth 2B (steel grade 304, 316)	-	250	A1

* Minimum order amount - 100 m2 for Colours RR22, RR24, RR26, RR29, RR32, RR33, RR34, RR35, RR44, RR45, RR750

Coatings and colors

Colour chart	Coating	Colour
Standard	GreenCoat HIARC (steel)	RR20, RR21, RR23, RR40, RR41, RR42, RR43
	GreenCoat HIARC Matt (steel)	RR40, RR41, RR45
Extended	GreenCoat HIARC (steel)	RR22, RR24, RR26, RR29, RR32, RR33, RR34, RR35, RR44, RR45, RR750 More RR colours
	PVDF (aluminium)	Most common RAL colours
	Powder paint (steel&aluminium)	RAL colours

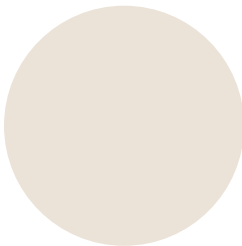
Minimum order sizes:

Standard chart: No limitations

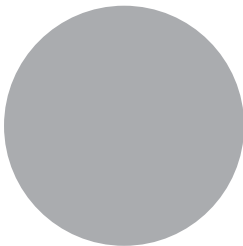
Extended chart:

- GreenCoat HIARC (steel): 100m²
- PVDF (aluminium): 500 m²
- Powder paint (steel&aluminium): 100m²

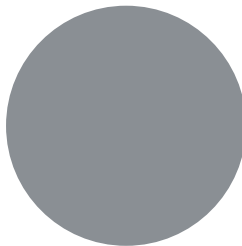
Colours



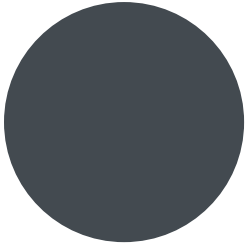
RR20



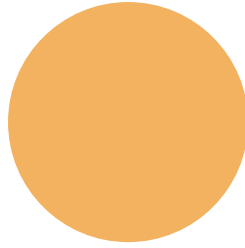
RR21



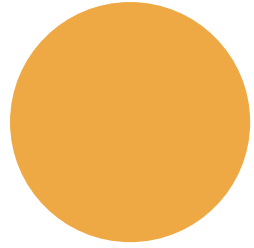
RR22



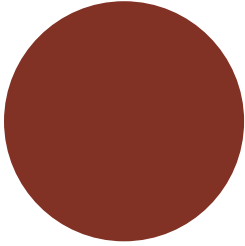
RR23



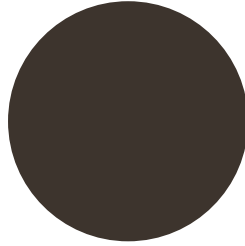
RR24



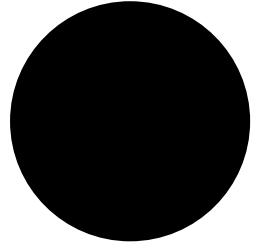
RR26



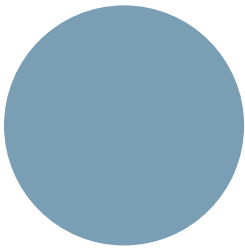
RR29



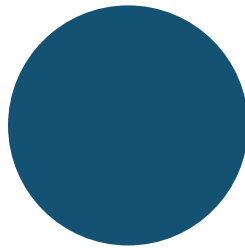
RR32



RR33



RR34



RR35



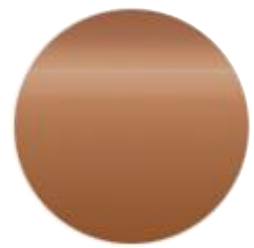
RR40



RR41



RR42



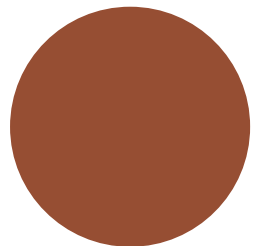
RR43



RR44



RR45



RR750

BIM objects



Download BIM objects to your desktop

ProdLib brings Ruukki products as BIM models directly to your desktop in 3D form for design programs AutoCAD, Autodesk Revit, Archicad and Tekla Structures. Product libraries compile all necessary design models and detailed drawings in one place. Library updates are automatically notified, so as a user you can be sure that your product information is constantly up to date. ProdLib can also be used as a standalone desktop application.

[Go to BIM library](#)

Download documents

Declaration of performance

Design profile S18:



Declaration of Performance 28/PP/VIM - Low profiles

PDF, 233.1 KB

Other design profiles:



Declaration of Performance 25/PP/PAR - Cladding products

PDF, 48.8 KB

Cor-Ten design profiles:



Ruukki Cor-Ten facades - Certification

PDF, 31.8 KB

Order form



Ruukki Design Profile order form_2.2

XLSM, 0.6 MB

Maintenance instructions



Ruukki Cor-Ten facades - maintenance instructions

PDF, 70.3 KB



Ruukki powder coated facade claddings - Maintenance instructions

PDF, 0.6 MB



Ruukki colour coated steel - Maintenance instructions

PDF, 0.6 MB

Accessory documents



EN_Cladding_Accessories_02_2020

PDF, 3.6 MB



Profiled sheets and purlins accessories 05_2022

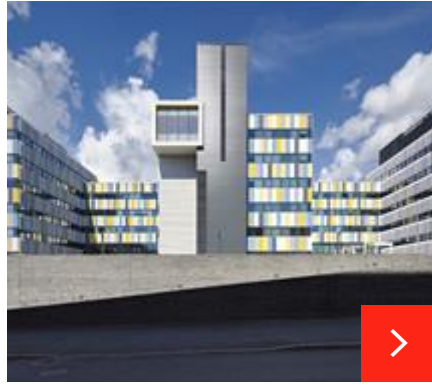
PDF, 0.8 MB

References



Autoverkkokauppa

Ruukki delivered Design Tokyo profiles for the renovated facade of a car showroom.



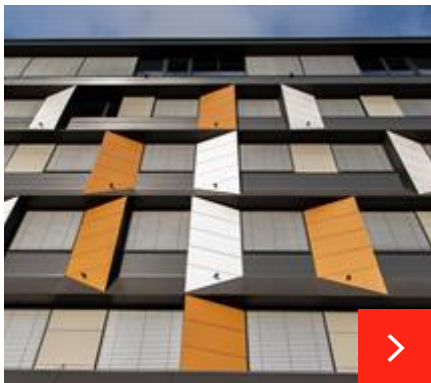
Eventes Business Garden Espoo

Eventes Business Garden located near the Iso Omena Shopping Centre in Espoo is an impressive office building that combines various steel facades in an interesti...



Wood-Mizer Industries

Ruukki participated in this project from the designing stage up to the construction stage – cooperation with a General Contractor and installation company. Ruuk...



Office building in SWH Office Center

Ruukki delivered façade cladding materials for Skanstes City in Latvia