

Cladding Lamella Groove 20

Create a grooved surface with Lamella Groove 20 for ventilated steel and aluminium facade systems.

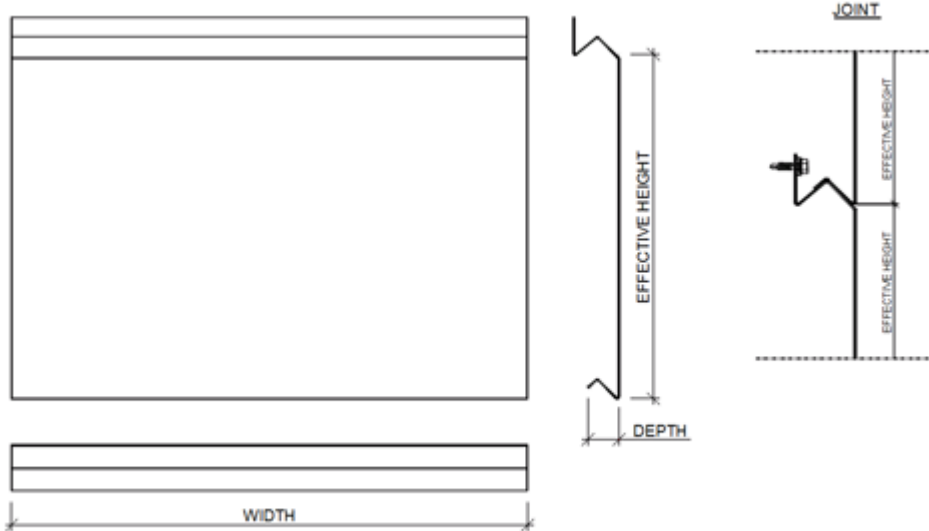
Ruukki® Emotion

Available also with perforation and backlighting.



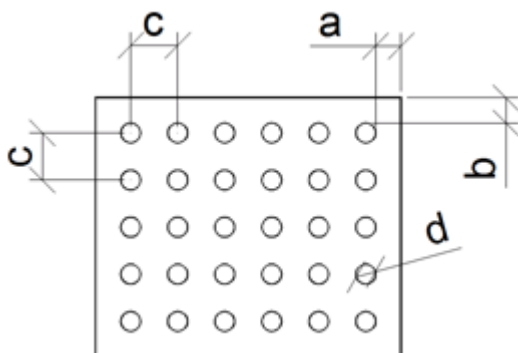
[SEND CONTACT REQUEST](#)

Properties



Model name	Cladding Lamella Groove 20
Effective height	Standard 300 mm (150 - 300 mm)
Width	150 - 4000 mm
Depth	40 mm
Fastening Style	Hidden

Perforation layout



Dimension/hole	mm
a	≥ 10

b	≥10
c	≥ d+25
d	16, 20, 30, 40, 50, 60

Symmetrical perforation: Fully perforated in symmetrical square layout. Only 1 hole size (d) and distance (a, b, c) per product.

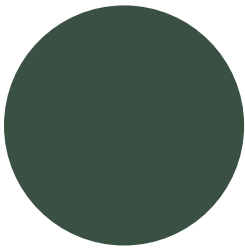
Art perforation: Fully or partly perforated in freely chosen locations. All hole sizes (d) and distances (c) available per product.

Materials

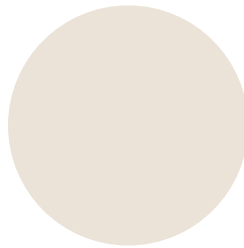
Material	Material thickness (mm)	Weight (kg/m ²)	Surface treatment	Available with perforation	Minimum order amount (m ²)	Reaction to fire
Steel	1.2	9.7	GreenCoat Hiarc	No	Standard colours: No limitations Extended colours: 900	A1
	1.2	9.7	Powder coating	Yes	100	A2 - s1,d0
Aluminium	2.0	5.6	Powder coating	Yes	250	-
	2.0	5.6	PVDF coating	Yes	250	-
	1.5	4.2	Powder coating	Yes	250	-
	1.5	4.2	PVDF coating	Yes	350	-
Rheinzink	1.0	7.4	Pre-patinated (no coating)	Limited	100	A1
Copper, Brass & Bronze	1.0	9.3	Pre-patinated (no coating)	Limited	60	A1
	1.5	13.9	Pre-patinated (no coating)	Limited	60	A1
Stainless steel	1.0	8.2	Smooth (2B)	Limited	125	A1
	1.0	8.2	Wet grinded (4N)	Limited	125	A1

Coatings and colors

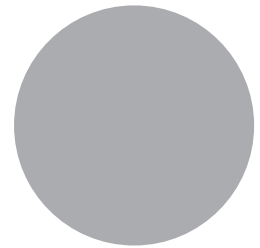
Colour chart	Coating	Colour
Standard	GreenCoat HIARC (steel)	RR20, RR21, RR23, RR40, RR41, RR42, RR43
	GreenCoat HIARC Matt (steel)	RR40, RR41, RR45
Extended	GreenCoat HIARC (steel)	RR11, RR22, RR24, RR26, RR29, RR30, RR31, RR32, RR33, RR34, RR35, RR36, RR37, RR44, RR45, RR750 More RR colours
	PVDF (aluminium)	Most common RAL colours
	Powder paint (steel&aluminium)	RAL colours



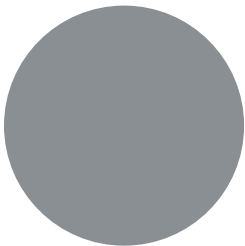
RR11 Pine green



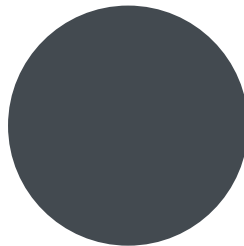
RR20 Winter white



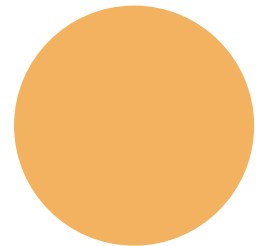
RR21 Pebble grey



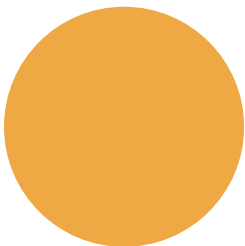
RR22 Stone grey



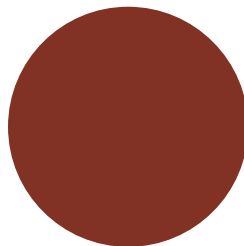
RR23 Mountain grey



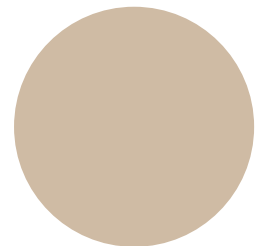
RR24 Harvest yellow



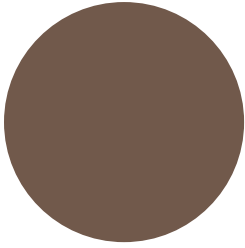
RR26 Yellow



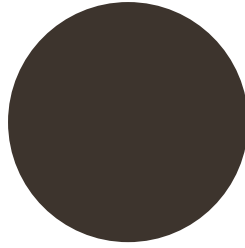
RR29 Cottage red



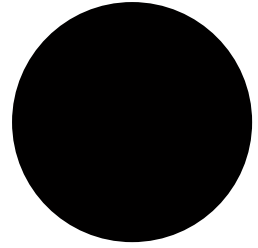
RR30 Almont brown



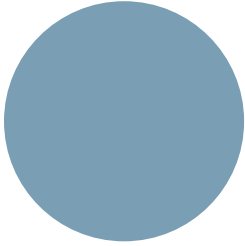
RR31 Terra brown



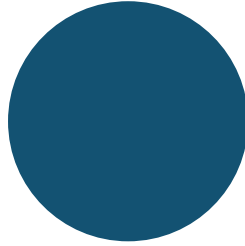
RR32 Walnut brown



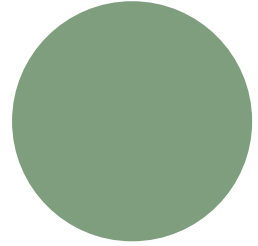
RR33 Nordic night black



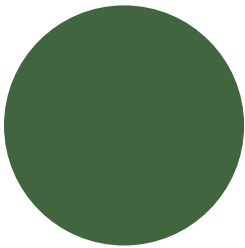
RR34 River blue



RR35 Lake blue



RR36 Green



RR37 Forrest green



RR40 Metallic silver



RR41 Metallic dark silver



RR42 Metallic gold



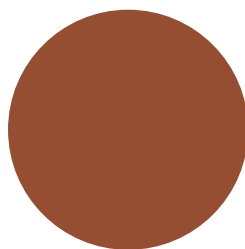
RR43 Metallic copper



RR44 Metallic blue



RR45 Metallic titanium



RR750 Tile red

BIM objects



Download BIM objects to your desktop

ProdLib brings Ruukki products as BIM models directly to your desktop in 3D form for design programs AutoCAD, Autodesk Revit, Archicad and Tekla Structures. Product libraries compile all necessary design models and detailed drawings in one place. Library updates are automatically notified, so as a user you can be sure that your product information is constantly up to date. ProdLib can also be used as a standalone desktop application.

[Go to BIM library](#)

Download documents

Declaration of performance



Declaration of Performance 25/PP/PAR - Cladding products

PDF, 48.8 KB

Order form



Ruukki cladding lamellas order form_2.3.3

XLSM, 1.0 MB

Maintenance instructions



Ruukki Cor-Ten facades - maintenance instructions

PDF, 70.3 KB



Ruukki powder coated facade claddings - Maintenance instructions

PDF, 0.6 MB



Ruukki colour coated steel - Maintenance instructions

PDF, 0.6 MB

Accessory documents



EN_Cladding_Accessories_02_2020

PDF, 3.6 MB

References



Commercial buildings –Lohi shopping center

Lohi is a 3-storey shopping center with a surface area of 22,000 square meters in the center of Lohja and home to 15 stores and 4 restaurants.



Maritime Centre Vellamo

Maritime Centre Vellamo in Kotka is shaped like a large wave, and its facade sparkles like the rippling surface of water.



Rescue Department building in Puolanka, Finland

Ruukki was selected as the supplier with its cost-effective solutions and quick and easy installation. The building is an elegant ensemble with a façade finish...

[See all cladding lamella references](#)