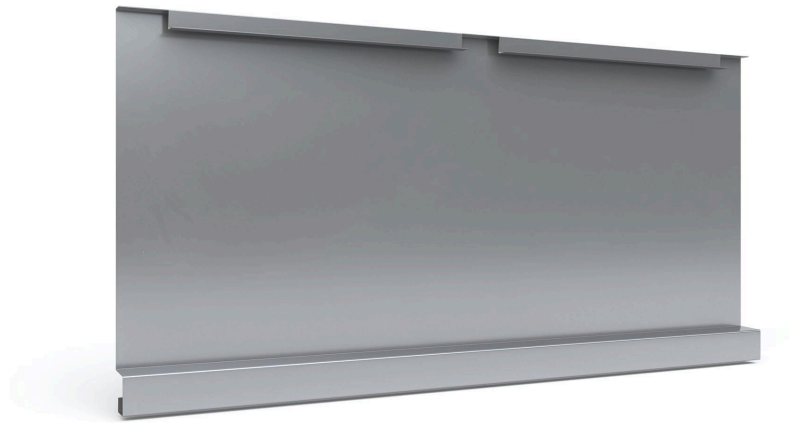


## Cladding Lamella Straight 100

Create a straightforward appearance with Lamella straight 100 for ventilated steel and aluminium facade systems.

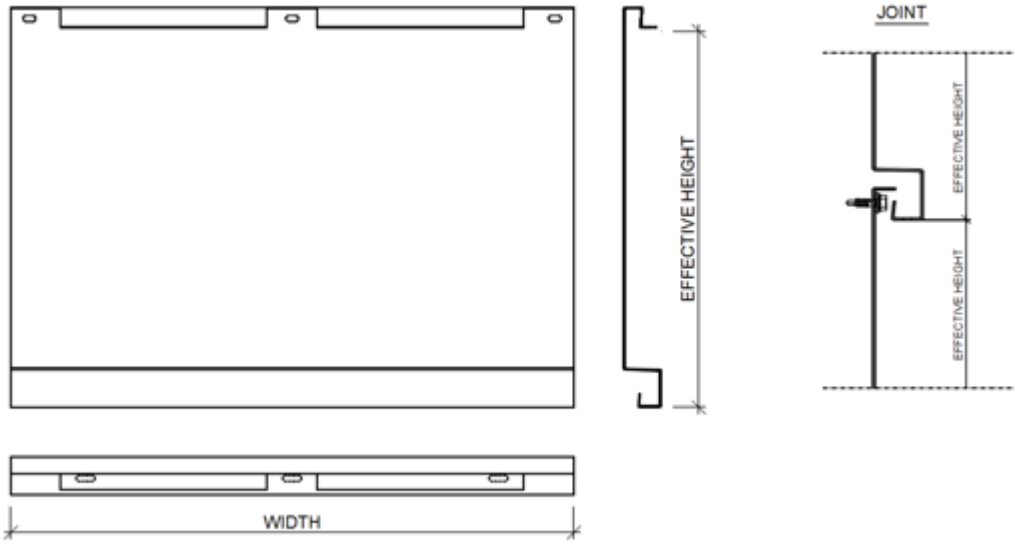
### **Ruukki® Emotion**

Available also with perforation and backlighting.



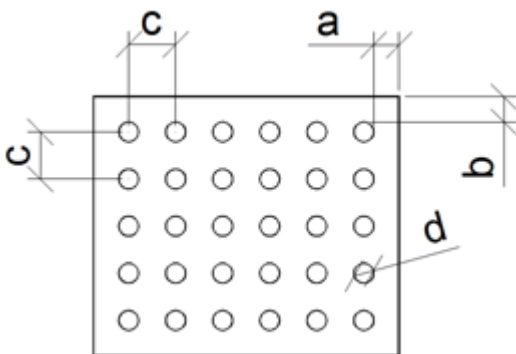
[SEND CONTACT REQUEST](#)

# Properties



Model name	Cladding Lamella Straight 100
Effective height	Standard 300 (300...350) mm
Width	150...3800 mm
Depth	30 mm

## Perforation layout



Dimension/hole	mm
a	$\geq 10$
b	$\geq 10$
c	$\geq d+25$

d	16, 20, 30, 40, 50, 60
---	------------------------

Symmetrical perforation: Fully perforated in symmetrical square layout. Only 1 hole size (d) and distance (a, b, c) per product.

Art perforation: Fully or partly perforated in freely chosen locations. All hole sizes (d) and distances (c) available per product.

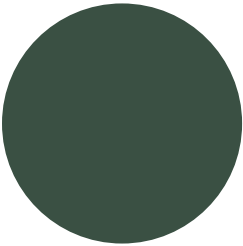
## Materials

Material	Material thickness (mm)	Weight (kg/m <sup>2</sup> )	Surface treatment	Available with perforation	Minimum order amount (m <sup>2</sup> )	Reaction to fire
Steel	1.2	9.7	GreenCoat Hiarc	No	Standard colours: No limitations Extended colours: 900	A1
	1.2	9.7	Powder coating	Yes	100	A2 - s1,d0
Aluminium	2.0	5.6	Powder coating	Yes	250	-
	2.0	5.6	PVDF coating	Yes	250	-
	1.5	4.2	Powder coating	Yes	250	-
	1.5	4.2	PVDF coating	Yes	350	-
Rheinzink	1.0	7.4	Pre-patinated (no coating)	Limited	100	A1
Copper, Brass & Bronze	1.0	9.3	Pre-patinated (no coating)	Limited	60	A1
	1.5	13.9	Pre-patinated (no coating)	Limited	60	A1
Stainless steel	1.0	8.2	Smooth (2B)	Limited	125	A1
	1.0	8.2	Wet grinded (4N)	Limited	125	A1

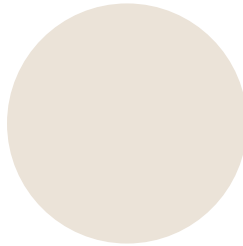
# Coatings and colors

Colour chart	Coating	Colour
Standard	GreenCoat HIARC (steel)	RR20, RR21, RR23, RR40, RR41, RR42, RR43
	GreenCoat HIARC Matt (steel)	RR40, RR41, RR45
Extended	GreenCoat HIARC (steel)	RR11, RR22, RR24, RR26, RR29, RR30, RR31, RR32, RR33, RR34, RR35, RR36, RR37, RR44, RR45, RR750 <a href="#">More RR colours</a>
	PVDF (aluminium)	Most common RAL colours
	Powder paint (steel&aluminium)	<a href="#">RAL colours</a>

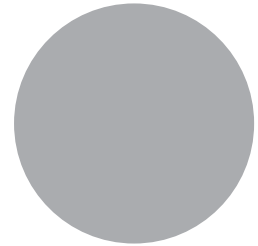
## Colours



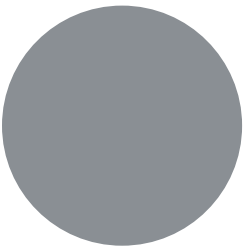
RR11 Pine green



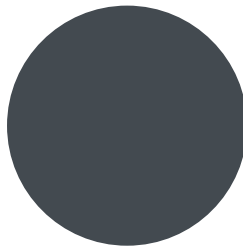
RR20 Winter white



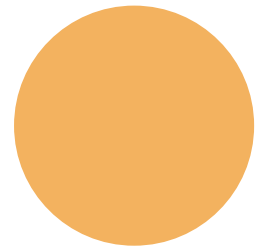
RR21 Pebble grey



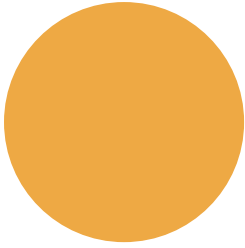
RR22 Stone grey



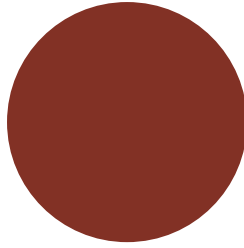
RR23 Mountain grey



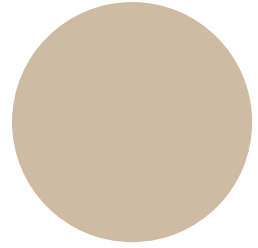
RR24 Harvest yellow



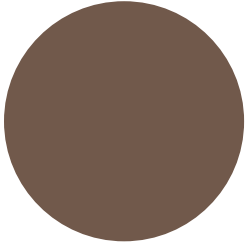
RR26 Yellow



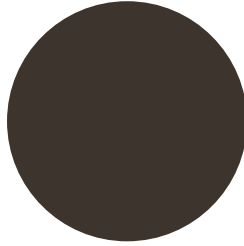
RR29 Cottage red



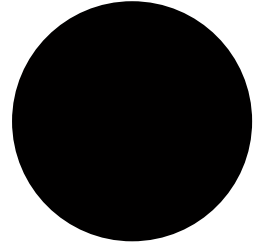
RR30 Almont brown



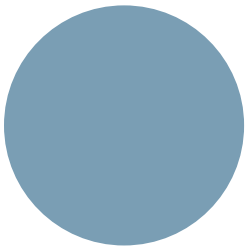
RR31 Terra brown



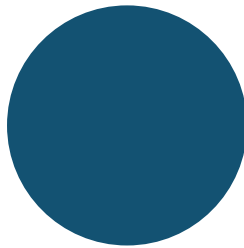
RR32 Walnut brown



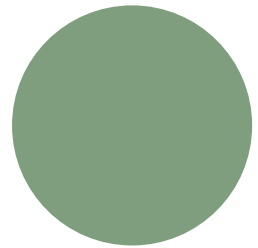
RR33 Nordic night black



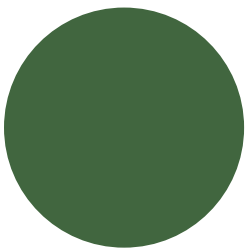
RR34 River blue



RR35 Lake blue



RR36 Green



RR37 Forrest green



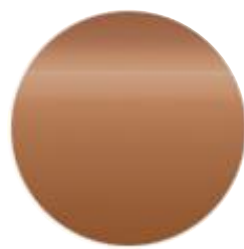
RR40 Metallic silver



RR41 Metallic dark silver



RR42 Metallic gold



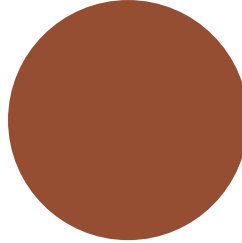
RR43 Metallic copper



RR44 Metallic blue



RR45 Metallic titanium



RR750 Tile red

## BIM objects



### Download BIM objects to your desktop

ProdLib brings Ruukki products as BIM models directly to your desktop in 3D form for design programs AutoCAD, Autodesk Revit, Archicad and Tekla Structures. Product libraries compile all necessary design models and detailed drawings in one place. Library updates are automatically notified, so as a user you can be sure that your product information is constantly up to date. ProdLib can also be used as a standalone desktop application.

[Go to BIM library](#)

## Download documents

### Declaration of performance



**Declaration of Performance 25/PP/PAR - Cladding products**

PDF, 48.8 KB

### Order form



**Ruukki cladding lamellas order form\_2.3.3**

XLSM, 1.0 MB

## Maintenance instructions



### **Ruukki Cor-Ten facades - maintenance instructions**

PDF, 70.3 KB



### **Ruukki powder coated facade claddings - Maintenance instructions**

PDF, 0.6 MB



### **Ruukki colour coated steel - Maintenance instructions**

PDF, 0.6 MB

## Accessory documents



### **EN\_Cladding\_Accessories\_02\_2020**

PDF, 3.6 MB

## References



### **MAX IV office building**

MAX IV is the next-generation synchrotron radiation facility in Lund, Sweden.

[See all cladding lamella references](#)