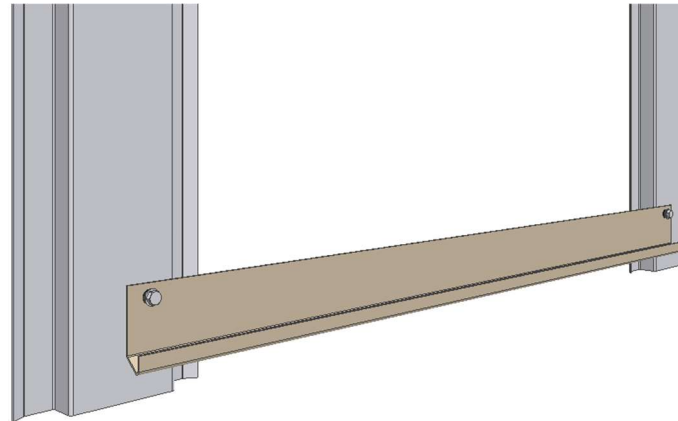


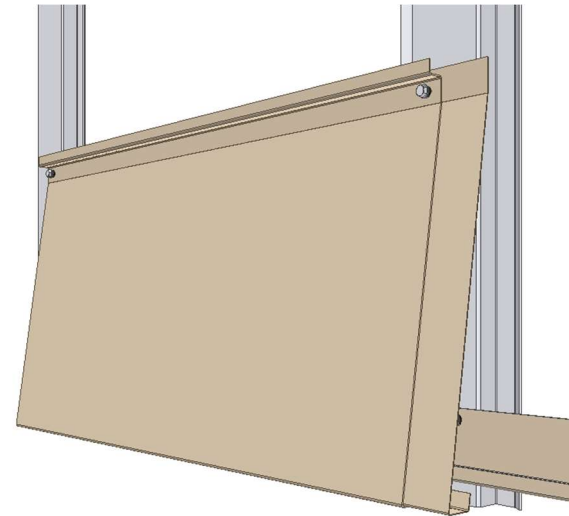
INSTRUCTIONS FOR FASTENING THE PANEL AND FOLLOW-UP OF THE DIMENSIONS

FACADE CLADDINGS / CLADDING LAMELLAS LAMELLA LAP 60

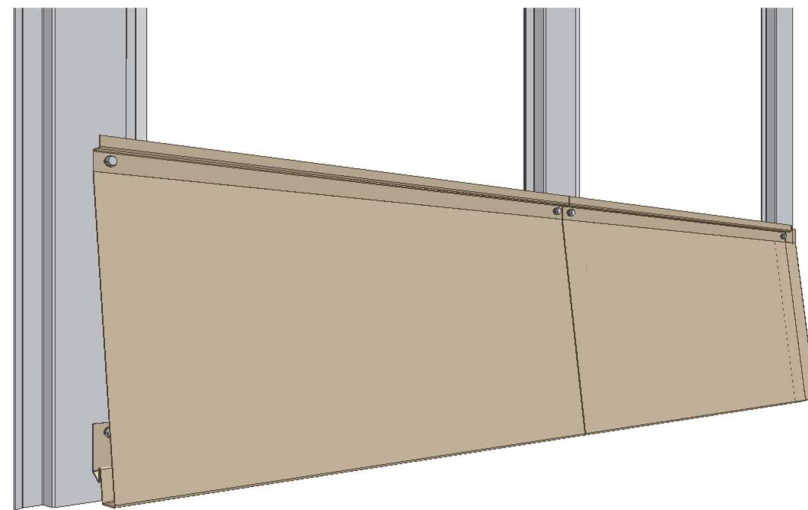
FASTENING OF THE LAMELLA



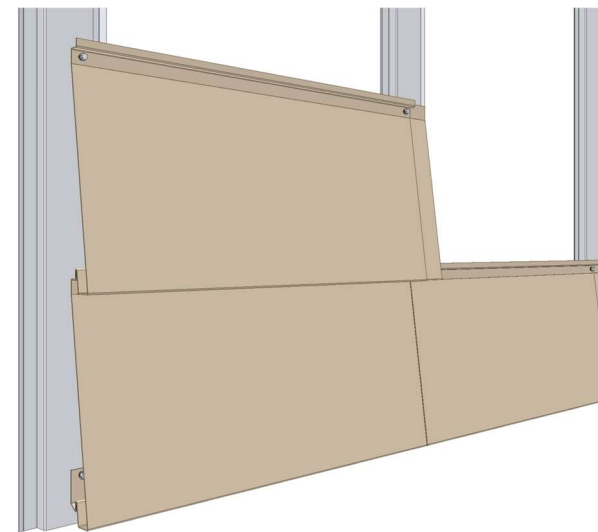
1. Add fasteners to the upper edge of the starting fillet CA1SF5, the joint should be at the center of the stud.



2. Add a joint piece to the end of the lamella and fasten the lamella.



3. Continue with next lamella, leave a 2-3 mm vertical gap between them for thermal expansion.



4. Install the next row as shown in the picture.

Recommended fasteners:

- For fastening to support stud (e.g. CA1SS1), use screws S3H48022D02S4C
→ Note: This screw is not suitable for fastening to timber.

Use a joint piece CA1J6 between the lamellas.

Final execution must be according to the structural designer's instructions!

RUKKI

FOLLOW-UP OF THE DIMENSIONS

Follow the effective height. Check the dimensions from the plans!

Lamella tolerances:

- Effective height: ± 2 mm
- Width: ± 2 mm

Sub frame tolerances in horizontal direction:

- For one lamella: ± 1 mm
- Between each support stud: ± 1 mm

Installation tolerance: $+2 / -1$ mm

