

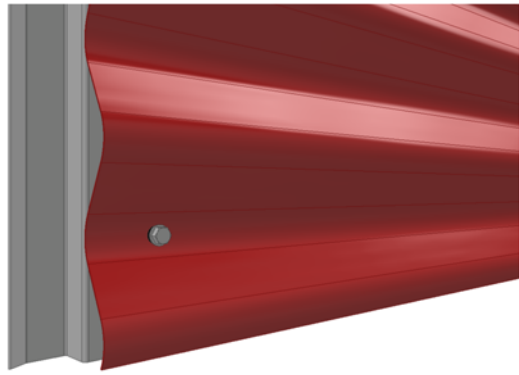
INSTRUCTIONS FOR FASTENING OF THE PROFILE AND FOLLOW-UP OF THE DIMENSIONS

FACADE CLADDINGS / DESIGN PROFILES DESIGN TOKYO S18

RUUKKI

FASTENING OF THE PROFILE

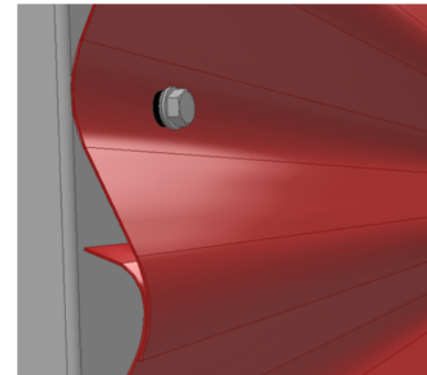
Minimum fastening to each support stud:



1. Add fasteners to the lowest wave bottom



2. Add fasteners to the bottom of every second wave



3. At the overlapping add fasteners to the lowest wave bottom

If necessary, add additional fasteners to any loose edge.

Recommended fasteners:

- For fastening to support stud (e.g. CA1SS1), use screws S3H48022D02S4C or S3H4825D4S9.5
- For fastening to timber, use screws S3T4826PA0E

Recommended spacing between support studs: c/c 600 - 900 mm

Final execution must be according to the structural designer's instructions!

FOLLOW-UP THE DIMENSIONS

Follow the effective width. Effective width is 1100 mm.

Check the dimensions from the plans!

Profile tolerances:

- Effective width ± 5
- Length +10, -5 mm

Sub frame tolerances in horizontal direction:

- For one profile: ± 1 mm ($L \leq 3000$ mm) or ± 2 mm ($L > 3000$ mm)
- Between each support stud: ± 1 mm

Overlapping at profile ends ~100 mm or use vertical joint flashings in between.

